

# microlab

microlab

just listen



**M-800**  
User Manual

[www.microlab.cn](http://www.microlab.cn)  
Microlab Electronics Company Ltd.  
Made in China

MULTIMEDIA SPEAKER SYSTEM


## Important Safety Instructions




### Caution:

To reduce the risk of electric shock, do not dismantle the product and do not expose the apparatus to rain or moisture. No user-serviceable parts inside. Refer servicing to qualified personnel only.

### Explanation of Graphical Symbols:

 The lightning flash within an equilateral triangle is intended to alert you to the presence of uninsulated dangerous voltage within the product's enclosure that may be of sufficient magnitude to constitute an electric shock to a person or persons.

 The exclamation point within an equilateral triangle is intended to alert you to the presence of important operating and maintenance (servicing) instructions in the literature accompanying the product.

### WARNINGS:

1. Read Instructions - All the safety and operating instructions must be read before the product is operated.
2. Retain Instructions - The safety and operating instructions should be kept with the product for future reference.
3. Heed warnings - All warnings on the product and in the operating instructions should be adhered to.
4. Follow instructions - All operating and users instructions should be followed.
5. Installation - Install in accordance with the manufacturer's instructions.
6. Power sources - This product should be operated only from the type of power source indicated by the marking adjacent to the power cord entry. If you are not sure of the type of power supply to your home, consult your product dealer or local power company.
7. Grounding or polarization - the product is not required to be grounded. Ensure the plug is fully inserted into the wall outlet or extension cord receptacle to prevent blade or pin exposure. Some versions of the product are equipped with a power cord fitted with a polarized alternating line plug (a plug having one blade wide than the other). This plug will fit onto the power outlet only one way. This is a safety feature. If you are unable to insert the plug fully into the outlet, try reversing the plug. If the plug should still fail to fit, contact your electrician to replace your obsolete outlet. Do not defeat the safety purpose of the polarized plug. When using an extension power-supply cord or a power-supply cord other than that supplied with the product, it should be fitted with the appropriate molded plugs and carry safety approval appropriate to the country of use.
8. Power cord protection - Power-supply cords should be routed so that they are not likely to be walked on, kinked or pinched by items placed on or against them, paying particular attention to cords from plugs, receptacles and the point where they exit from the appliance.
9. Overloading - Do not overload wall outlets, extension cords or multiple sockets, as this can result in a risk of fire or electric shock.
10. Ventilation - The product must be properly ventilated. Do not place the product on a bed, sofa, or other similar surface. Do not cover the product with any items such as tablecloths, newspapers, etc.
11. Heat - The product should be situated away from heat sources such as radiators, heat registers, stoves, or other products including amplifiers that produce heat. No naked flame sources, such as lighted candles, should be placed on the apparatus.
12. Water and moisture - To reduce the risk of fire or electric shock, do not expose the product to rain, dripping, splashing or excessive moisture such as in a sauna or bathroom. Do not use this product near water, for example, near a bathtub, washbowl, kitchen sink, laundry tub, in a wet basement, or near a swimming pool, or etc.
13. Object and Liquid Entry - Never push objects of any kind into this product through openings, as they may touch dangerous voltage points or short-circuit parts that could result in a fire or electric shock. Never spill liquid of any kind on the product. Do not place any object containing liquid on top of the product.
14. Cleaning - Unplug the product from the wall outlet before cleaning. The cabinet of the subwoofer may be cleaned by dusting with a dry cloth. If you wish to use an aerosol cleaning spray, do not spray directly on the cabinet; spray onto the cloth. Be careful not to damage the drive units.
15. Attachments - Do not use attachments not recommended by the product manufacturers, as they may cause hazards.
16. Accessories - Do not place this product on an unstable cart, stand, tripod, bracket or table. The product may fall, causing serious injury to a child or adult, and serious damage to the product. Use only with a cart, stand,

tripod, bracket or table recommended by the manufacturer or sold with the product. Any mounting of the product should follow the manufacturers' instructions and should use a mounting accessory recommended by the manufacturer.

17. Moving the product - A product and cart combination should be moved with care. Quick stops, excessive force and uneven surfaces may cause the product and cart combination to overturn.
18. Un-use periods - The power cord of the device should be unplugged from the outlet during lightning storms or when the apparatus is left unused for a long period of time.
19. Servicing - Do not attempt to service this product yourself, as opening or removing covers may expose you to dangerous voltage or other hazards. Refer all servicing to qualified service personnel.
20. Please remove the power plug from the main power source or wall power source when not in use. When plugged in to a power source, the system is in standby mode, so the power is not entirely cut off.
21. Replacement parts - When replacement parts are required, ensure the service technician has used replacement parts specified by the manufacturer or have the same characteristics as the original part. Unauthorized substitutions may result in fire, electric shock or other hazards.
22. Mains fuses - For continued protection against fire hazard, use fuses only of the correct type and rating. The correct fuse specification for each voltage range is marked on the product.
23. Do not turn up the volume while listening to a section with very low level inputs or no audio signals. If you do, the speaker may be damaged when a peak level section is suddenly played.
24. The only means of completely disconnecting the product from the power supply is by removing the power cord from the wall outlet or the product. The wall outlet or the power cord entry to the product must remain freely accessible at all times while the product is in use.
25. Try to install the product near a wall socket or extension cord and shall be easily accessible.
26. The highest environmental temperature suitable for this product is 40°C.

## Introduction

2.1 layout speaker system from our multimedia series with two crystal clear satellites and subwoofer. Cabinets constructed from quality wood material for warm sound and good sound characteristics. Beautiful finishes making it extremely presentable in your living or study rooms. Ideal for multimedia applications, connect easily to most media player, such as Mp3/Mp4, CD/DVD player, TV or PC. Listen to your favourite Mp3 songs with this system in uncoloured audio and deep vocals. System utilizing bass reflex technology for deeper bass and depth in resolutions. Unique side panel with master volume, treble and bass level controls.

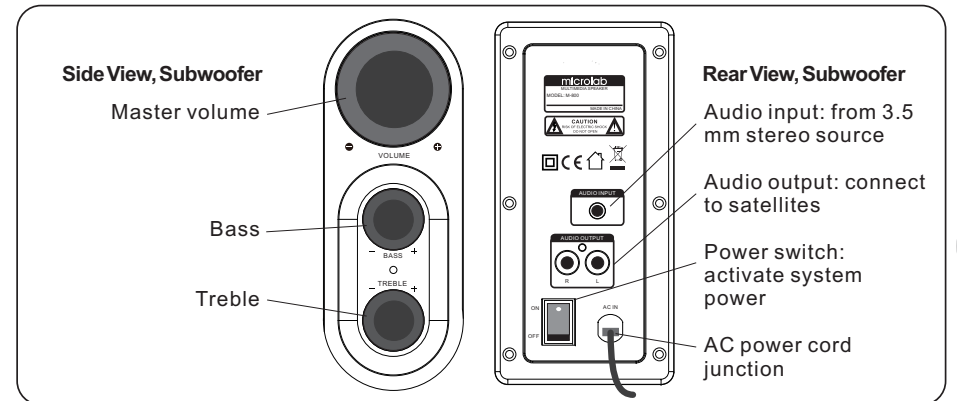
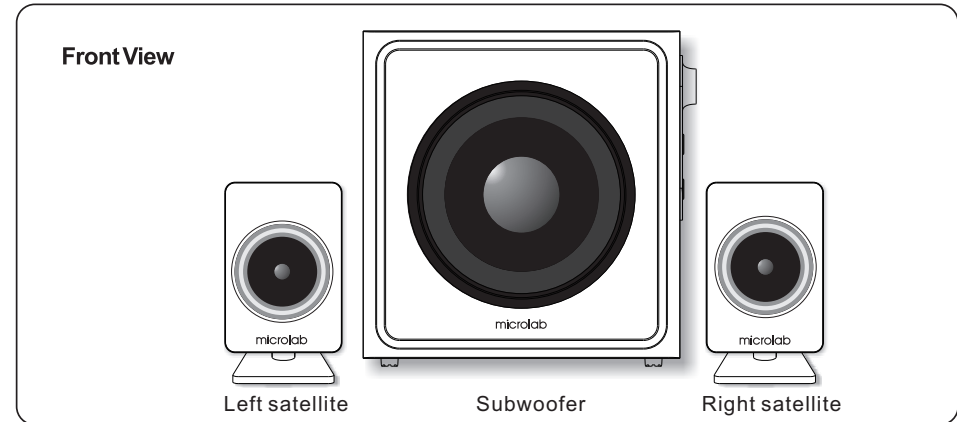
## Features

- Quality 2.1 speaker system with built-in amplifier
- Powerful clear and uncoloured sound
- Wooden subwoofer cabinet construction for quality sound characteristics
- Full audio spectrum performances, ideal for your favourite entertainment from Mp3, Mp4, CD/DVD movies and digital playbacks
- Bass reflex tunnel for deep bass and vocals
- Side panel controls for quick and easy access

## Package contents

- M-800 subwoofer 1 pc
- M-800 satellites 2 pcs
- 3.5 mm stereo - 3.5mm stereo 1 pc
- User manual 1 pc

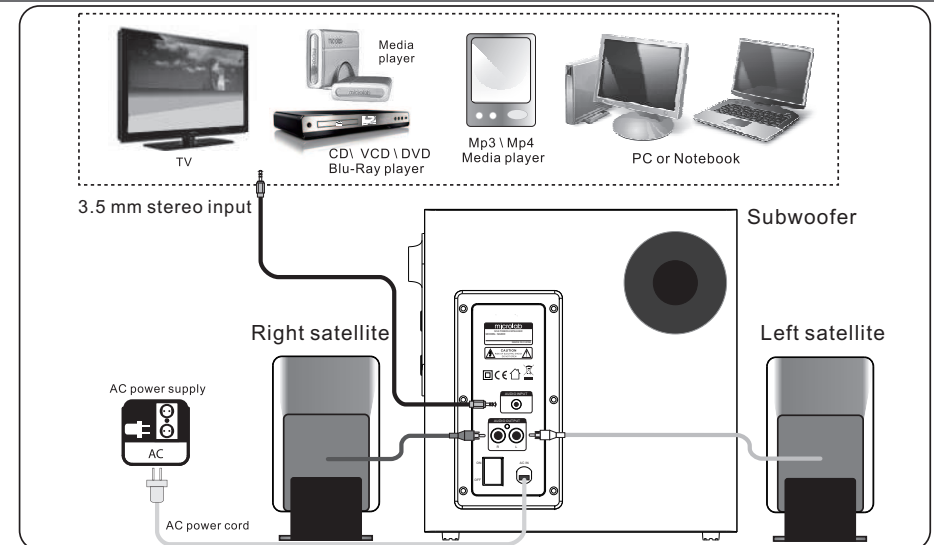
## Illustrations



EN  
3

EN  
4

## Connections



## Operations

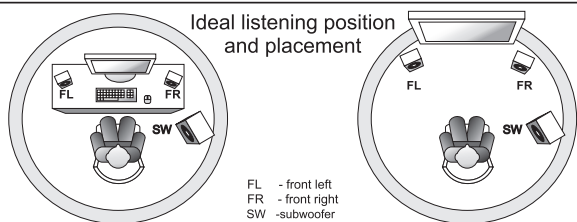
### Installation:

Prior to connecting the speakers, ensure the AC power plug is removed from the AC source. Secondly ensure the volume knob is set to minimum.

1. Connect the left satellite speaker cable to the left audio output jack at the rear of the subwoofer.
2. Connect the right satellite speaker cable to the right audio output jack.
3. Place both satellites on extreme sides forward of the listening position. The subwoofer can be placed on the floor at any position since bass is not directional.
4. Next, connect the playback source to the 3.5 mm stereo audio input jacks. Playback source can be from Mp3/Mp4, CD/DVD player, TV or PC.
5. Last, connect the AC power cord to the AC power supply. Please ensure the AC power ratings printed on the rear panel match with your country's AC power ratings. Using unmatched ratings can damage the speaker system.

### Operation:

1. Set the master volume level to the minimum.
2. Depress the power switch at the rear of the subwoofer.
3. Start the media player and its music playback.
4. Slowly increase the volume level to your preferred level. The master volume knob is located in the side panel of the subwoofer.
5. For sound effects, you can adjust the treble and bass volume levels in the side panel controls.



EN  
5

## Frequently Asked Questions (FAQ)

Problem	Solutions
Power LED won't light up	Check if the system is powered on Check the power plug well connected
No Sound	Check if the audio source is working well Check if the audio and speaker cables well connected Check if the volume at right level
One or more satellite no sound	Check if the satellite cable well connected, and ensure source connection is correctly inserted
Static sound heard when volume knob is turned	Turn off the playback source first, then turn the speaker volume knob several times. Playback again and monitor. The static noise is due to dust, so simply turning the volume will remove it easily
What are the products supported?	Any playback devices such as PC, notebook, CD/DVD player, Media Players with 3.5mm stereo plug
Sound is distorted	Check if the source file is not corrupted, play a different song and test
Where to place this speaker	It is magnetically shielded so can be placed near LCD TV Monitor without any distortion
If the problem still exists, please contact the distributor or ask for professional service	

EN  
6

## Technical Information

### Amplifier

Output power, RMS	45 Watt RMS
Power distribution, Watt	10 Watt x 2+ 25 Watt RMS
Harmonic distortion	< 0.3% 1 W 1 kHz
Frequency response	30 Hz - 20 kHz
Signal/Noise ratio, dB	> 75 dB
Separation, dB	> 45 dB
Input sensitivity, mV	NA
Nominal impedance, ohm	NA

### Speakers

Tweeter driver type	3" x 2
Tweeter rated power	10 Watt 6 ohm
Bass driver type	6.5"
Bass rated power	30 Watt 8 ohm
Frequency range	NA

### Interfaces

Output	2RCA
Input	3.5 mm stereo
AC power	NA
Fuse	NA

### Dimensions

Product dimensions mm	NA
Product Net weight kg	NA

- The end -