

microlab

microlab

just listen



B53
User Manual

www.microlab.cn
Microlab Electronics Co.,Ltd
Made in China


Multimedia Speaker System


Important Safety Instructions

**Caution:**

To reduce the risk of electric shock, do not dismantle the product and do not expose the apparatus to rain or moisture. No user-serviceable parts inside. Refer servicing to qualified personnel only.

Explanation of Graphical Symbols:

 The lightning flash within an equilateral triangle is intended to alert you to the presence of uninsulated dangerous voltage within the product's enclosure that may be of sufficient magnitude to constitute an electric shock to a person or persons.

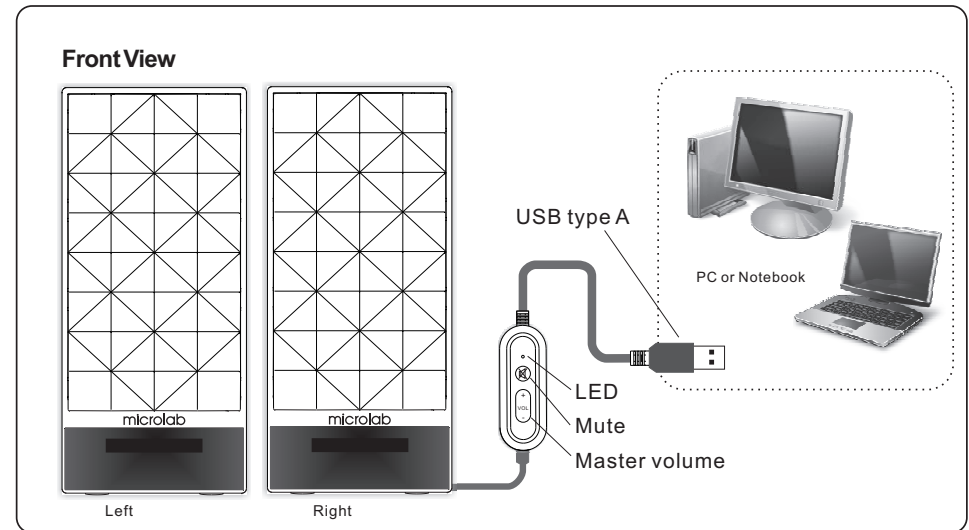
 The exclamation point within an equilateral triangle is intended to alert you to the presence of important operating and maintenance (servicing) instructions in the literature accompanying the product.

WARNINGS:

1. Read Instructions - All the safety and operating instructions must be read before the product is operated.
2. Retain Instructions - The safety and operating instructions should be kept with the product for future reference.
3. Heed warnings - All warnings on the product and in the operating instructions should be adhered to.
4. Follow instructions - All operating and users instructions should be followed.
5. Installation - Install in accordance with the manufacturer's instructions.
6. Power sources - This product should be operated only from the type of power source indicated by the marking adjacent to the power cord entry. If you are not sure of the type of power supply to your home, consult your product dealer or local power company.
7. Grounding or polarization - the product is not required to be grounded. Ensure the plug is fully inserted into the wall outlet or extension cord receptacle to prevent blade or pin exposure. Some versions of the product are equipped with a power cord fitted with a polarized alternating line plug (a plug having one blade wide than the other). This plug will fit onto the power outlet only one way. This is a safety feature. If you are unable to insert the plug fully into the outlet, try reversing the plug. If the plug should still fail to fit, contact your electrician to replace your obsolete outlet. Do not defeat the safety purpose of the polarized plug. When using an extension power-supply cord or a power-supply cord other than that supplied with the appliance, it should be fitted with the appropriate molded plugs and carry safety approval appropriate to the country of use.
8. Power cord protection - Power-supply cords should be routed so that they are not likely to be walked on, kinked or pinched by items placed on or against them, paying particular attention to cords from plugs, receptacles and the point where they exit from the appliance.
9. Overloading - Do not overload wall outlets, extension cords or multiple sockets, as this can result in a risk of fire or electric shock.
10. Ventilation - The product must be properly ventilated. Do not place the product on a bed, sofa, or other similar surface. Do not cover the product with any items such as tablecloths, newspapers, etc.
11. Heat - The product should be situated away from heat sources such as radiators, heat registers, stoves, or other products including amplifiers that produce heat. No naked flame sources, such as lighted candles, should be placed on the apparatus.
12. Water and moisture - To reduce the risk of fire or electric shock, do not expose the product to rain, dripping, splashing or excessive moisture such as in a sauna or bathroom. Do not use this product near water, for example, near a bathtub, washbowl, kitchen sink, laundry tub, in a wet basement, or near a swimming pool, or etc.
13. Object and Liquid Entry - Never push objects of any kind into this product through openings, as they may touch dangerous voltage points or short-circuit parts that could result in a fire or electric shock. Never spill liquid of any kind on the product. Do not place any object containing liquid on top of the product.
14. Cleaning - Unplug the product from the wall outlet before cleaning. The cabinet of the subwoofer may be cleaned by dusting with a dry cloth. If you wish to use an aerosol cleaning spray, do not spray directly on the cabinet; spray onto the cloth. Be careful not to damage the drive units.
15. Attachments - Do not use attachments not recommended by the product manufacturers, as they may cause hazards.

Illustrations

16. Accessories - Do not place this product on an unstable cart, stand, tripod, bracket or table. The product may fall, causing serious injury to a child or adult, and serious damage to the product. Use only with a cart, stand, tripod, bracket or table recommended by the manufacturer or sold with the product. Any mounting of the product should follow the manufacturers' instructions and should use a mounting accessory recommended by the manufacturer.
17. Moving the product - A product and cart combination should be moved with care. Quick stops, excessive force and uneven surfaces may cause the product and cart combination to overturn.
18. Un-use periods - The power cord of the device should be unplugged from the outlet during lightning storms or when the apparatus is left unused for a long period of time.
19. Servicing - Do not attempt to service this product yourself, as opening or removing covers may expose you to dangerous voltage or other hazards. Refer all servicing to qualified service personnel.
20. Please remove the power plug from the main power source or wall power source when not in use. When plugged in to a power source, the system is in standby mode, so the power is not entirely cut off.
21. Replacement parts - When replacement parts are required, ensure the service technician has used replacement parts specified by the manufacturer or have the same characteristics as the original part. Unauthorized substitutions may result in fire, electric shock or other hazards.
22. Mains fuses - For continued protection against fire hazard, use fuses only of the correct type and rating. The correct fuse specification for each voltage range is marked on the product.
23. Do not turn up the volume while listening to a section with very low level inputs or no audio signals. If you do, the speaker may be damaged when a peak level section is suddenly played.
24. The only means of completely disconnecting the product from the power supply is by removing the power cord from the wall outlet or the product. The wall outlet or the power cord entry to the product must remain freely accessible at all times while the product is in use.
25. Try to install the product near a wall socket or extension cord and shall be easily accessible.
26. The highest environmental temperature suitable for this product is 40°C.



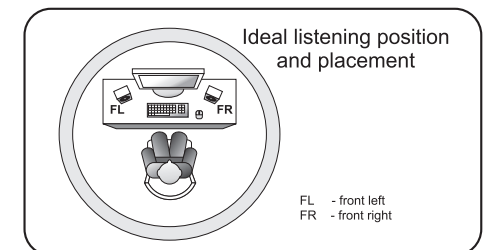
Operation:

Initial connection

1. The first initial connection to your computer will prompt Windows™ operating system to install its own USB audio device driver.
2. The orange LED on the wired remote control will blink rapidly while Windows™ commence installation. The "USB audio device" will be displayed in its alert windows.
3. Once installed successfully, Windows™ will alert with several successful installed devices.
4. For Macintosh systems, the USB audio device will be detected and installed. Please ensure the correct playback device is set thereafter.

Operations

1. For multiple audio devices in a single computer, please select the correct audio devices for playback.
2. Go to Control Panel / Sounds and Audio Devices Properties / Audio tab / Sound playback section and under "Default device:" - select the "USB Audio Device"
3. Click on "Apply" to save the setting.
4. Select the audio playback software and start the music.
5. Adjust the playback volume level on the wired remote control or from within the music software.
6. Depress VOL + or - to adjust to your preferred listening level.
7. Depress the Mute button to temporary disable the sound production.



EN
3

Introduction

Stereo speaker system with USB capability for enhanced music listening on your computer. Connect directly to your notebook or desktop USB port, and get instant USB audio function from within Windows™ operating system. Great for systems without sound card.

No external driver required, simply plug and play. Include a wired remote control for volume control functions.

Features

- Stereo speakers for USB port
- Unique and aesthetic diamond shaped speaker cover
- Quality tweeter drivers
- No external driver needed, self install within Windows™ operating system
- Works with iMac USB audio driver too
- For notebook and desktop computer

Package contents

- B53 speakers 2 pcs
- USB wired remote control 1 pc
- User manual 1 pc

Connection:

Connection:

1. Place both speakers on extreme sides of the listening position.
2. Connect the mini-USB connector to the wired remote control.
3. Next connect the wired remote control to notebook or desktop USB type A port.

EN
4

Technical Information

AMPLIFIER

Total Power:	3 Watt RMS
Power distribution:	1.5 Watt x 2
Harmonic distortion:	< 0.1 % 1 W 1 kHz
Frequency response:	40 Hz - 20 kHz
Signal/Noise ratio:	> 75 dB
Separation:	> 45 dB

Speakers

Tweeter driver type:	2.5" x 2
Tweeter rated power:	5 Watt 6 ohm

Interfaces

Output:	minUSB from wired remote control
Input:	USB type A audio signal from computer

Frequently Asked Questions (FAQ)

Frequently Asked Questions	Answers
Low volume output	Check the playback software volume level and test at mid / maximum levels.
	Adjust speaker's own volume level to mid range and test
No Sound	Check if the USB audio driver is correctly installed and working properly in its properties page
	Ensure volume is correctly set
	Correct digital music format is used, e.g., Mp3
Static sound heard	Ensure playback track is of proper and higher bit rate, too much compression will increase noise level
What are the products supported?	Windows™ PC, and notebooks
Sound is distorted	Check if the volume is at lower level and the Mp3 format is recorded at above 192 bitrate
Where to place this speaker	It is magnetically shielded so can be placed near LCD TV Monitor without any distortion
If the problem still exists, please contact the distributor or ask for professional service	

EN
5

Intentionally left blank

EN
6

- The end -