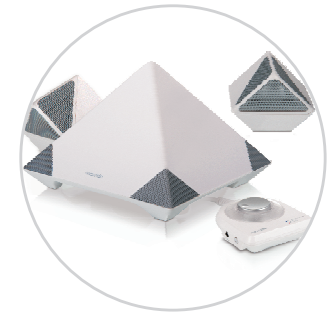


microlab



microlab

just listen



A6352
User Manual



www.microlab.cn
Microlab Electronics Co.,Ltd
Made in China

Important Safety Instructions

**Caution:**

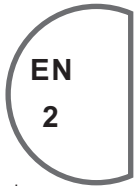
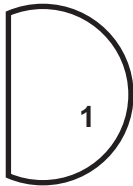
To reduce the risk of electric shock, do not dismantle the product and do not expose the apparatus to rain or moisture. No user-serviceable parts inside. Refer servicing to qualified personnel only.

Explanation of Graphical Symbols:

-  The lightning flash within an equilateral triangle is intended to alert you to the presence of uninsulated dangerous voltage within the product's enclosure that may be of sufficient magnitude to constitute an electric shock to a person or persons.
-  The exclamation point within an equilateral triangle is intended to alert you to the presence of important operating and maintenance (servicing) instructions in the literature accompanying the product.

WARNINGS:

1. Read Instructions - All the safety and operating instructions must be read before the product is operated.
2. Retain Instructions - The safety and operating instructions should be kept with the product for future reference.
3. Heed warnings - All warnings on the product and in the operating instructions should be adhered to.
4. Follow instructions - All operating and users instructions should be followed.
5. Installation - Install in accordance with the manufacturer's instructions.
6. Power sources - This product should be operated only from the type of power source indicated by the marking adjacent to the power cord entry. If you are not sure of the type of power supply to your home, consult your product dealer or local power company.
7. Grounding or polarization - the product is not required to be grounded. Ensure the plug is fully inserted into the wall outlet or extension cord receptacle to prevent blade or pin exposure. Some versions of the product are equipped with a power cord fitted with a polarized alternating line plug (a plug having one blade wide than the other). This plug will fit onto the power outlet only one way. This is a safety feature. If you are unable to insert the plug fully into the outlet, try reversing the plug. If the plug should still fail to fit, contact your electrician to replace your obsolete outlet. Do not defeat the safety purpose of the polarized plug. When using an extension power-supply cord or a power-supply cord other than that supplied with the appliance, it should be fitted with the appropriate molded plugs and carry safety approval appropriate to the country of use.
8. Power cord protection - Power-supply cords should be routed so that they are not likely to be walked on, kinked or pinched by items placed on or against them, paying particular attention to cords from plugs, receptacles and the point where they exit from the appliance.
9. Overloading - Do not overload wall outlets, extension cords or multiple sockets, as this can result in a risk of fire or electric shock.
10. Ventilation - The product must be properly ventilated. Do not place the product on a bed, sofa, or other similar surface. Do not cover the product with any items such as tablecloths, newspapers, etc.
11. Heat - The product should be situated away from heat sources such as radiators, heat registers, stoves, or other products including amplifiers that produce heat. No naked flame sources, such as lighted candles, should be placed on the apparatus.
12. Water and moisture - To reduce the risk of fire or electric shock, do not expose the product to rain, dripping, splashing or excessive moisture such as in a sauna or bathroom. Do not use this product near water, for example, near a bathtub, washbowl, kitchen sink, laundry tub, in a wet basement, or near a swimming pool, or etc.
13. Object and Liquid Entry - Never push objects of any kind into this product through openings, as they may touch dangerous voltage points or short-circuit parts that could result in a fire or electric shock. Never spill liquid of any kind on the product. Do not place any object containing liquid on top of the product.
14. Cleaning - Unplug the product from the wall outlet before cleaning. The cabinet of the subwoofer may be cleaned by dusting with a dry cloth. If you wish to use an aerosol cleaning spray, do not spray directly on the cabinet; spray onto the cloth. Be careful not to damage the drive units.
15. Attachments - Do not use attachments not recommended by the product manufacturers, as they may cause hazards.



16. Accessories - Do not place this product on an unstable cart, stand, tripod, bracket or table. The product may fall, causing serious injury to a child or adult, and serious damage to the product. Use only with a cart, stand, tripod, bracket or table recommended by the manufacturer or sold with the product. Any mounting of the product should follow the manufacturers' instructions and should use a mounting accessory recommended by the manufacturer.
17. Moving the product - A product and cart combination should be moved with care. Quick stops, excessive force and uneven surfaces may cause the product and cart combination to overturn.
18. Un-use periods - The power cord of the device should be unplugged from the outlet during lightning storms or when the apparatus is left unused for a long period of time.
19. Servicing - Do not attempt to service this product yourself, as opening or removing covers may expose you to dangerous voltage or other hazards. Refer all servicing to qualified service personnel.
20. Please remove the power plug from the main power source or wall power source when not in use. When plugged in to a power source, the system is in standby mode, so the power is not entirely cut off.
21. Replacement parts - When replacement parts are required, ensure the service technician has used replacement parts specified by the manufacturer or have the same characteristics as the original part. Unauthorized substitutions may result in fire, electric shock or other hazards.
22. Mains fuses - For continued protection against fire hazard, use fuses only of the correct type and rating. The correct fuse specification for each voltage range is marked on the product.
23. Do not turn up the volume while listening to a section with very low level inputs or no audio signals. If you do, the speaker may be damaged when a peak level section is suddenly played.
24. The only means of completely disconnecting the product from the power supply is by removing the power cord from the wall outlet or the product. The wall outlet or the power cord entry to the product must remain freely accessible at all times while the product is in use.
25. Try to install the product near a wall socket or extension cord and shall be easily accessible.
26. The highest environmental temperature suitable for this product is 40°C.

EN
3

Introduction

Aesthetically designed in unique pyramid shaped speakers. Layout in 2.1 subwoofer system for wider sound spectrum and depth. Fits in most room types such as bedroom, kitchen or even your studies. Featuring delicate woofer created for stronger bass and compact satellites for clear highs. Woofer is directed downwards for improved bass effects. Cube shaped satellites for improved stereo effects. Ideal for multimedia use, connects directly to any 3.5mm stereo interface. Comes with wired remote control for quick volume control and 3D effect. Rotary volume dial for fine level adjustments.

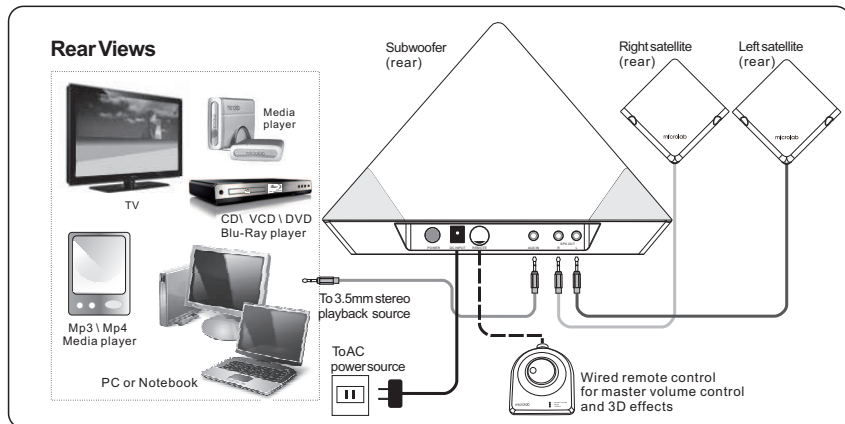
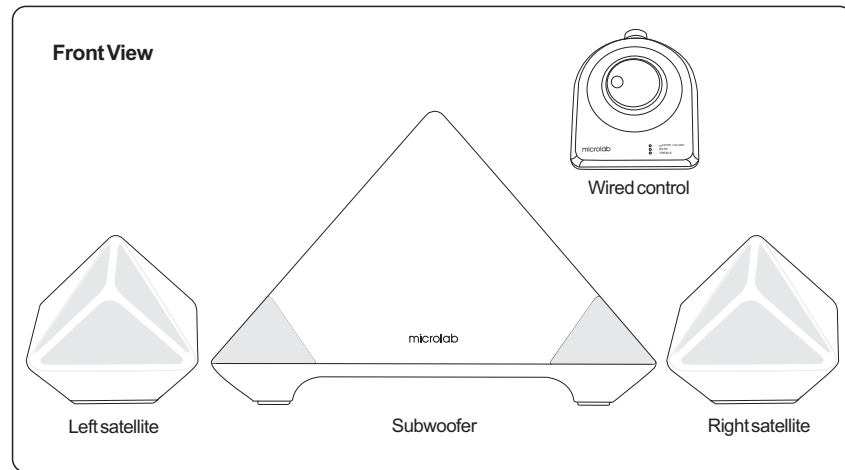
Features

- Pyramid shaped 2.1 speaker system with built-in amplifier
- Satellite speakers in cube box
- 3D sound effects
- Wired remote control with volume dial and LED
- Full audio spectrum performances, ideal for your favourite entertainment from Mp3, Mp4, CD/DVD movies and digital playbacks
- Specially designed downward woofer for better bass and resolution
- Comes with 3.5mm stereo connection that connects to most media players and computers

Package contents

- | | |
|-----------------------------|-------|
| • A6352 subwoofer | 1 pc |
| • A6352 satellites | 2 pcs |
| • Wired remote control | 1 pc |
| • Power adapter | 1 pc |
| • 3.5mm - 3.5mm audio cable | 1 pc |
| • User manual | 1 pc |

Illustrations



EN
4

Operation

Connection:

1. Connect the left and right satellites to the subwoofer rear panel to its respective 3.5 mm jacks.
2. For analog source, connect the playback source (Media player, VCD, DVD, or CD player) to the 3.5mm stereo jack (AUX INPUT). The 3.5mm - 3.5mm stereo cable is provided with the package.
3. Please place the satellites on extreme sides in front of the listening position.
4. Connect the AC power cord to the power supply source.

Operation

Operation:

1. Turn on the AC power source and the speaker power from the rear panel power switch.
2. Activate the media player playback.
3. Adjust the volume on the media player, and speaker master volume to your preferred listening level.
4. Use the wired remote control to adjust the master volume level.
5. For added effects, depress the 3D button on the wired remote control side. This will activate the ambient 3D sound effects.

Technical Information

AMPLIFIER

Total Power: 38 Watt RMS
 Power distribution: 9 Watt x 2 + 20 Watt
 Harmonic distortion: < 0.5 % 1 W 1 kHz
 Frequency response: 50 Hz - 16 kHz
 Signal/Noise ratio: > 80 dB
 Separation: > 60 dB

Speakers

Tweeter driver type: 2" x 2
 Tweeter rated power: 10 Watt 4 ohm
 Bass driver type: 4"
 Bass rated power: 25 Watt 8 ohm

Interfaces

Output: 3.5mm stereo R & L jacks
 Input: 3.5mm stereo AUX jack

Intentionally left blank

EN
5

Frequently Asked Questions (FAQ)

Frequently Asked Questions	Answers
Low volume output	Check the media source own volume level, adjust to about mid volume range and listen.
	Adjust speaker's own volume level to mid range and listen
No Sound	Check if the audio source is properly connected or media player's playback has started
	Ensure volume is correctly set
	Correct digital music format is used, e.g., Mp3
Static sound heard	Ensure playback track is of proper and higher bit rate, too much compression will increase noise level
What are the products supported?	Any playback devices such as PC, Media Players with 3.5mm stereo plug.
Sound is distorted	Check if the volume is at lower level and the Mp3 format is recorded at above 196 bitrate
Where to place this speaker	It is magnetically shielded so can be placed near LCD TV Monitor without any distortion
If the problem still exists, please contact the distributor or ask for professional service	

EN
6

- The end -