



# microlab



microlab



Art For The Ear



M-600  
User manual

Microlab Technology Co.,Ltd  
Made in China

No:80-M600(10)-97-0001-01

All symbols and logo belong to the respective brand holder or registered holder. All specifications and information are subject to changes without further notice. Slight variations and differences might appear between the printed photos and actual product due to product enhancement.

Prior to first use, please read the manual carefully

High Performance Acoustic

**Important Safety Instructions**



**Caution:**

To reduce the risk of electric shock, do not dismantle the product and do not expose the apparatus to rain or moisture. No user-serviceable parts inside. Refer servicing to qualified personnel only.

**Explanation of Graphical Symbols:**

The lightning flash within an equilateral triangle is intended to alert you to the presence of uninsulated dangerous voltage within the product's enclosure that may be of sufficient magnitude to constitute an electric shock to a person or persons.

The exclamation point within an equilateral triangle is intended to alert you to the presence of important operating and maintenance (servicing) instructions in the literature accompanying the product.

**WARNINGS:**

1. Read Instructions - All the safety and operating instructions must be read before the product is operated.
2. Retain Instructions - The safety and operating instructions should be kept product for future reference.
3. Heed warnings - All warnings on the product and in the operating instructions should be adhered to.
4. Follow instructions - All operating and use instructions should be followed.
5. Installation - Install in accordance with the manufacturer's instructions.
6. Power sources - This product should be operated only from the type of power source indicated by the marking adjacent to the power cord entry. If you are not sure of the type of power supply to your home, consult your product dealer or local power company.
7. Grounding or polarisation - the product is not required to be grounded. Ensure the plug is fully inserted into the wall outlet or extension cord receptacle to prevent blade or pin exposure. Some versions of the product are equipped with a power cord fitted with a polarized alternating line plug (a plug having one blade wide than the other). This plug will fit onto the power outlet only one way. This is a safety feature. If you are unable to insert the plug fully into the outlet, try reversing the plug. If the plug should still fail to fit, contact your electrician to replace your obsolete outlet. Do not defeat the safety purpose of the polarised plug. When using an extension power-supply cord or a power-supply cord other than that supplied with the appliance, it should be fitted with the appropriate moulded-on plugs and carry safety approval appropriate to the country of use.
8. Power cord protection - Power-supply cords should be routed so that they are not likely to be walked on, kinked or pinched by items placed on or against them, paying particular attention to cords from plugs, receptacles and the point where they exit from the appliance.
9. Overloading - Do not overload wall outlets, extension cords or multiple sockets, as this can result in a risk of fire or electric shock.
10. Ventilation - The product must be properly ventilated. Do not place the product on a bed, sofa, or other similar surface. Do not cover the product with any items such as tablecloths, newspapers, etc.
11. Heat - The product should be situated away from heat sources such as radiators, heat registers, stoves, or other products) including amplifiers that produce heat. No naked flame sources, such as lighted candles, should be placed on the apparatus.
12. Water and moisture - To reduce the risk of fire or electric shock, do not expose the product to rain, dripping, splashing or excessive moisture such as in a sauna or bathroom. Do not use this product near water for example, near a bathtub, washbowl, kitchen sink, laundry tub, in a wet basement, or near a swimming pool and the like.
13. Object and Liquid Entry - Never push objects of any kind into this product through openings, as they may touch dangerous voltage points or short-circuit parts that could result in a fire or electric shock. Never spill liquid of any kind on the product. Do not place any object containing liquid on top of the product.
14. Cleaning - Unplug the product from the wall outlet before cleaning. The cabinet of the subwoofer may be cleaned by dusting with a dry cloth. If you wish to use an aerosol cleaning spray, do not spray directly on the cabinet; spray onto the cloth. Be careful not to damage the drive units.
15. Attachments - Do not use attachments not recommended by the product manufactures, as they may cause hazards.
16. Accessories - Do not place this product on an unstable cart, stand, tripod, bracket or table. The product may fall, causing serious injury to a child or adult, and serious damage to the product. Use only with a cart, stand, tripod, bracket or table recommended by the manufacturer or sold with the product. Any mounting of the product should follow the manufacturer's instructions and should use a mounting accessory recommended by the manufacturer.
17. Moving the product - A product and cart combination should be moved with care. Quick stops, excessive force and uneven surfaces may cause the product and cart combination to overturn.
18. Unuse periods - The power cord of the appliance should be unplugged from the outlet during lightning storms or when the apparatus is left unused for a long period of time.

**Frequently Asked Questions (FAQ)**

	Solution
Power LED won't light up	Check if the system is powered on
	Check the power plug is well connected
No Sound	Check if the audio source is working well
	Check if the audio and speaker cables are well connected
	Check if the volume is at right level
One or more satellite no sound	Check if the satellite cable is well connected
No Bass	Check if the Bass Volume is at right level
Sound is distorted	Check if the volume is at lower level
If the problem still exists, please contact the distributor or ask for professional service	

- The end -

All rights reserved  
© 2010 Microlab Technology Co., Ltd

## Technical Information

### Specifications

#### Amplifier

Output power:	40 Watt RMS
Power distribution:	12 Watt x 2 + 16 Watt
Harmonic distortion:	< 0.3% 1W 1kHz
Signal/Noise ratio:	> 75dB
Separation:	> 45dB
Nominal impedance:	4 ohm

#### Speakers

Tweeter driver type:	3" x 2
Tweeter rated power:	5 Watt x 2, 6 ohm
Bass driver type:	5"
Bass rated power:	15 Watt, 4 ohm

#### Interfaces

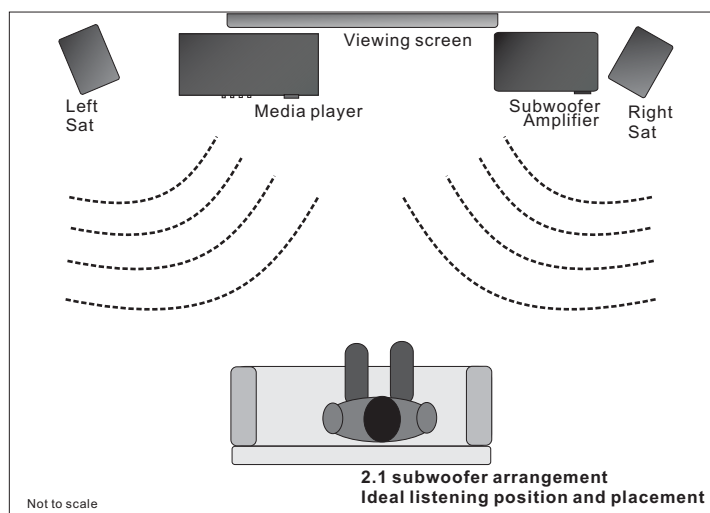
Output:	2RCA
Input:	2RCA

#### Power

Power supply:	AC 220V - 240V, 50Hz 140mA or 120V 60Hz, 280mA
---------------	---

#### Dimensions

Subwoofer dimension:	245 x 175 x 275mm
Satellites dimensions:	95 x 175 x 105mm
Product net weight:	5.4kg



19. Servicing - Do not attempt to service this product yourself, as opening or removing covers may expose you to dangerous voltage or other hazards. Refer all servicing to qualified service personnel.
20. Please remove the power plug from the main power source or wall power source when not in use. When plugged in to a power source, the system is in standby mode, so the power is not entirely cut off.
21. Replacement parts - When replacement parts are required, ensure the service technician has used replacement parts specified by the manufacturer or have the same characteristics as the original part. Unauthorized substitutions may result in fire, electric shock or other hazards.
22. Mains fuses - For continued protection against fire hazard, use fuses only of the correct type and rating. The correct fuse specification for each voltage range is marked on the product.
23. Do not turn up the volume while listening to a section with very low level inputs or no audio signals. If you do, the speaker may be damaged when a peak level section is suddenly played.
24. The only means of completely disconnecting the product from the power supply is by removing the power cord from the wall outlet or the product. The wall outlet or the power cord entry to the product must remain freely accessible at all times while the product is in use.
25. Try to install the product near a wall socket or extension cord and shall be easily accessible.
26. The highest environmental temperature suitable for this product is 40°C.

## Introduction

The ultimate multimedia speakers for all type of media players, computer, Mp3/Mp4 players and CD/DVD players. An all time favourites among many, this system sounds good, looks good and feels good too. Designed specifically and optimised for digital audio playbacks, the M series product are subwoofer systems with deep bass and full range dynamics using Microlab's eAirbass technology. Quality stylish 2.1 subwoofer system with powerful bass effect and stereophonic.

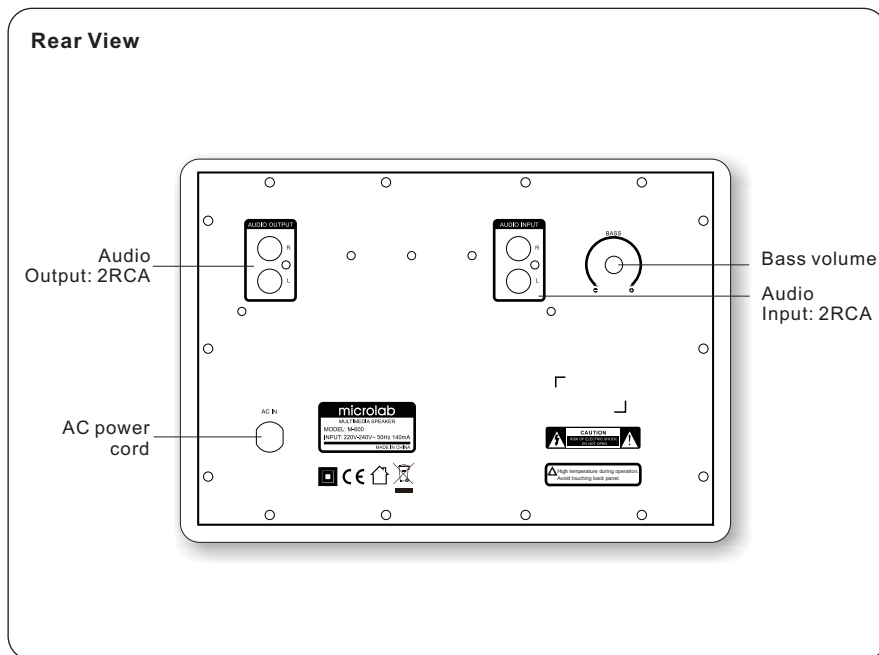
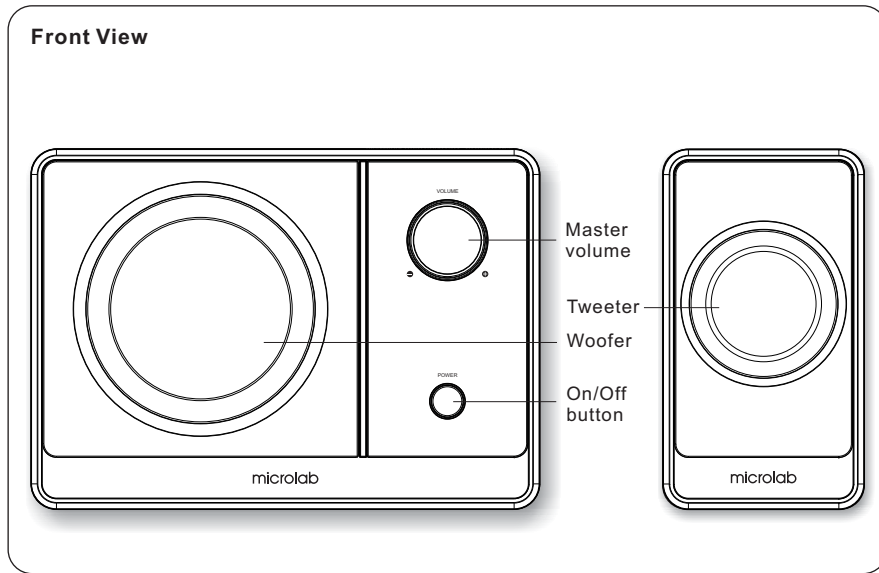
### Features

- 2.1 subwoofer system for multimedia and digital playbacks
- Beautiful and elegant finish, ideal for different room types
- Made from special aluminium speaker drivers for excellent audio characteristics and spectrum
- Full sound range and smooth operation
- Magnetically shielded for interference free operation

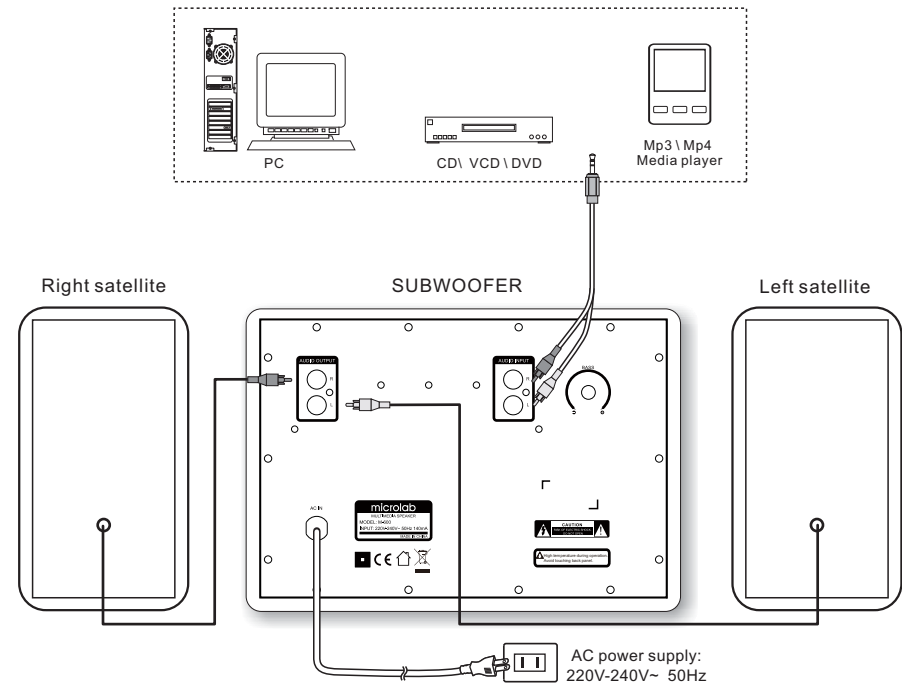
### Package contents

M-600 subwoofer	1pc
M-600 satellites	2pcs
3.5mm stereo - 2RCA cable	1pc
User manual	1pc

Illustrations



Product connection



\*Note the correct orientation of the satellites as illustrated.

**Connection:**

1. Connect the satellite speaker cables into the corresponding L & R RCA output on the rear of the subwoofer, then put the left channel satellite on the left and the right satellite on the right.
2. Connecting the speakers to the audio source.  
Please use the audio cable (3.5mm-2RCA). Connect RCA plugs of the audio cable into the L & R jacks at the back of the subwoofer, the other end into the output jack on the stereo audio source such as Mp3, Mp4, PC, or CD/DVD player.
3. Check the connection and make sure every cable is correctly connected, then connect power plug to the right AC outlet.

**Operation**

1. Ensure the volume is set to minimum.
2. Turn on the main AC power.
3. Please switch on the power of the system in front of the subwoofer.
4. Turn on the playback device such as Mp3, Mp4, CD/DVD, or media player.
5. Adjust the main volume in front of the subwoofer to your preferred level.
6. Next adjust the bass volume at the rear of the subwoofer to your preferred effect level.