

# microlab



microlab

Art For The Ear



H11  
User Manual

Microlab Technology Co., Ltd  
Made in China

No:80-H11-97-0001-01

All symbols and logo belong to the respective brand holder or registered holder. All specifications and information are subject to changes without further notice. Slight variations and differences might appear between the printed photos and actual product due to product enhancement.

Ti-Dome Balanced Drive Multimedia Monitor



Prior to first use, please read the manual carefully



### Caution:

To reduce the risk of electric shock, do not dismantle the product and do not expose the apparatus to rain or moisture. No user-serviceable parts inside. Refer servicing to qualified personnel only.

### Explanation of Graphical Symbols:

-  The lightning flash within an equilateral triangle is intended to alert you to the presence of uninsulated dangerous voltage within the product's enclosure that may be of sufficient magnitude to constitute an electric shock to a person or persons.
-  The exclamation point within an equilateral triangle is intended to alert you to the presence of important operating and maintenance (servicing) instructions in the literature accompanying the product.

### WARNINGS:

1. Read Instructions - All the safety and operating instructions must be read before the product is operated.
2. Retain Instructions - The safety and operating instructions should be kept for future reference.
3. Heed warnings - All warnings on the product and in the operating instructions should be adhered to.
4. Follow instructions - All operating and use instructions should be followed.
5. Installation - Install in accordance with the manufacturer's instructions.
6. Power sources - This product should be operated only from the type of power source indicated by the marking adjacent to the power cord entry. If you are not sure of the type of power supply to your home, consult your product dealer or local power company.
7. Grounding or polarisation - the product is not required to be grounded. Ensure the plug is fully inserted into the wall outlet or extension cord receptacle to prevent blade or pin exposure. Some versions of the product are equipped with a power cord fitted with a polarized alternating line plug (a plug having one blade wide than the other). This plug will fit onto the power outlet only one way. This is a safety feature. If you are unable to insert the plug fully into the outlet, try reversing the plug. If the plug should still fail to fit, contact your electrician to replace your obsolete outlet. Do not defeat the safety purpose of the polarised plug. When using an extension power-supply cord or a power-supply cord other than that supplied with the appliance, it should be fitted with the appropriate moulded-on plugs and carry safety approval appropriate to the country of use.
8. Power cord protection - Power-supply cords should be routed so that they are not likely to be walked on, kinked or pinched by items placed on or against them, paying particular attention to cords from plugs, receptacles and the point where they exit from the appliance.
9. Overloading - Do not overload wall outlets, extension cords or multiple sockets, as this can result in a risk of fire or electric shock.
10. Ventilation - The product must be properly ventilated. Do not place the product on a bed, sofa, or other similar surface. Do not cover the product with any items such as tablecloths, newspapers, etc.
11. Heat - The product should be situated away from heat sources such as radiators, heat registers, stoves, or other products) including amplifiers that produce heat. No naked flame sources, such as lighted candles, should be placed on the apparatus.
12. Water and moisture - To reduce the risk of fire or electric shock, do not expose the product to rain, dripping, splashing or excessive moisture such as in a sauna or bathroom. Do not use this product near water for example, near a bathtub, washbowl, kitchen sink, laundry tub, in a wet basement, or near a swimming pool and the like.
13. Object and Liquid Entry - Never push objects of any kind into this product through openings, as they may touch dangerous voltage points or short-circuit parts that could result in a fire or electric shock. Never spill liquid of any kind on the product. Do not place any object containing liquid on top of the product.
14. Cleaning - Unplug the product from the wall outlet before cleaning. The cabinet of the subwoofer may be cleaned by dusting with a dry cloth. If you wish to use an aerosol cleaning spray, do not spray directly on the cabinet; spray onto the cloth. Be careful not to damage the drive units.
15. Attachments - Do not use attachments not recommended by the product manufacturer, as they may cause hazards.
16. Accessories - Do not place this product on an unstable cart, stand, tripod, bracket or table. The product may fall, causing serious injury to a child or adult, and serious damage to the product. Use only with a cart, stand, tripod, bracket or table recommended by the manufacturer or sold with the product. Any mounting of the product should follow the manufacturer's instructions and should use a mounting accessory recommended by the manufacturer.
17. Moving the product - A product and cart combination should be moved with care. Quick stops, excessive force and uneven surfaces may cause the product and cart combination to overturn.
18. Unuse periods - The power cord of the appliance should be unplugged from the outlet during lightning storms or when the apparatus is left unused for a long period of time.

	Solutions
No Sound	<ul style="list-style-type: none"> <li>• Check if the audio source is working well</li> <li>• Check if the audio and speaker cables well connected</li> <li>• Check if the volume at right level</li> </ul>
One or more satellite no sound	<ul style="list-style-type: none"> <li>• Check if the satellite cable well connected, and ensure source connection is correctly inserted</li> </ul>
Static sound heard when volume knob is turned	<ul style="list-style-type: none"> <li>• Turn off the playback source first, then turn the speaker volume knob several times. Playback again and monitor. The static noise is due to dust, so simply turning the volume will remove it easily.</li> </ul>
What are the products supported?	<ul style="list-style-type: none"> <li>• Any playback devices such as PC, notebook, CD/DVD player, Media Players with 3.5mm stereo plug.</li> </ul>
Sound is distorted	<ul style="list-style-type: none"> <li>• Check if the source file is not corrupted, play a different song and test.</li> </ul>
Where to place this speaker	<ul style="list-style-type: none"> <li>• It is magnetically shielded so can be placed near LCD TV Monitor without any distortion</li> </ul>
If the problem still exists, please contact the distributor or seek professional advice.	

## Specifications

### Amplifier

Output power:	40Watt RMS
Power distribution:	20Watt x2
Harmonic distortion:	<0.3% 1W 1kHz
Frequency response:	45Hz - 90kHz
Signal/Noise ratio:	> 80dB
Separation:	> 60dB
Input sensitivity:	370mV
Nominal impedance:	Satellites - 6 ohm, Woofer - 4 ohm

### Speakers

Tweeter drivertype:	1"
Tweeter rated power:	10 Watt 6 ohm
Bass driver type:	4"
Bass rated power:	30 Watt 4 ohm

### Interfaces:

Output:	Terminal binding posts, 3.5mm earphones jack on wired remote control
Input:	2RCA
Auxilliary input:	3.5mm stereo jack

### Power

Power supply:	AC 220V -240V ~ 50Hz, 270mA
---------------	-----------------------------

### Dimensions

Product dimension:	145 x 254 x 230mm (W x H x D)
Product net weight:	6.9kg
Giftbox dimension:	364 x 327 x 275 mm (W x H x D)
Giftbox gross weight:	7.5kg

19. Servicing - Do not attempt to service this product yourself, as opening or removing covers may expose you to dangerous voltage or other hazards. Refer all servicing to qualified service personnel.
20. Please remove the power plug from the main power source or wall power source when not in use. When plugged in to a power source, the system is in standby mode, so the power is not entirely cut off.
21. Replacement parts - When replacement parts are required, ensure the service technician has used replacement parts specified by the manufacturer or have the same characteristics as the original part. Unauthorized substitutions may result in fire, electric shock or other hazards.
22. Mains fuses - For continued protection against fire hazard, use fuses only of the correct type and rating. The correct fuse specification for each voltage range is marked on the product.
23. Do not turn up the volume while listening to a section with very low level inputs or no audio signals. If you do, the speaker may be damaged when a peak level section is suddenly played.
24. The only means of completely disconnecting the product from the power supply is by removing the power cord from the wall outlet or the product. The wall outlet or the power cord entry to the product must remain freely accessible at all times while the product is in use.
25. Try to install the product near a wall socket or extension cord and shall be easily accessible.
26. The highest environmental temperature suitable for this product is 40°C.

## Introduction

MicroLab's advance design concept, quality stereo system with superb audio characteristics. Built for latest digital audio playbacks from various sources such as Mp3/Mp4, CD/DVD player or even TV monitor outputs. Capable of handling most digital output signals with ease and produce at high fidelity levels. Classy monitor system with titanium dome tweeters.

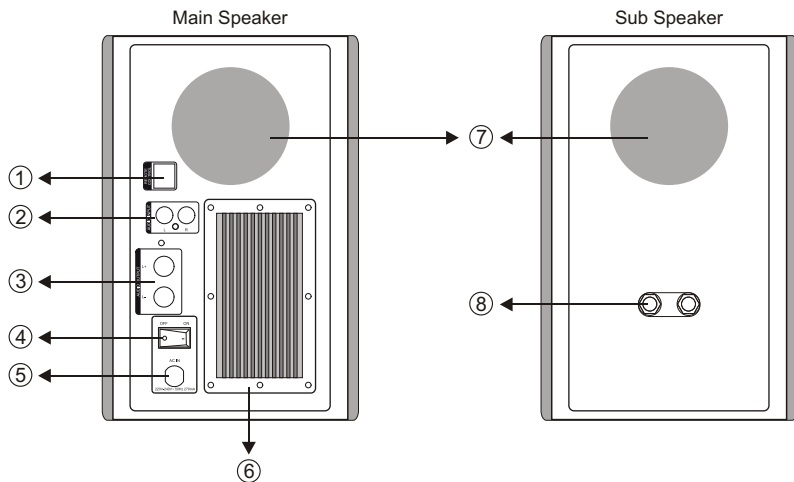
### Features

- Powerful 2.0 stereo systems with full range spectrum capabilities
- High quality wood cabinets with bass reflex system for depth and resolutions
- Uncoloured audio and balanced tones
- Wired remote control for easy master volume control, with 3.5mm stereo input jack and 3.5mm earphones jack
- Gorgeous black textured finish and front panels.

### Package contents

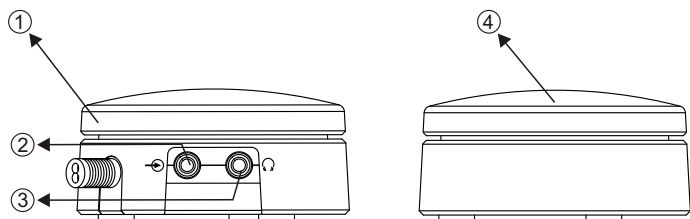
H11 stereo speakers	2pcs
Wired remote control	1pc
3.5mm stereo - 2RCA cable	1pc
Interconnect speaker cable	1pc
User manual	1pc

**Panel:**

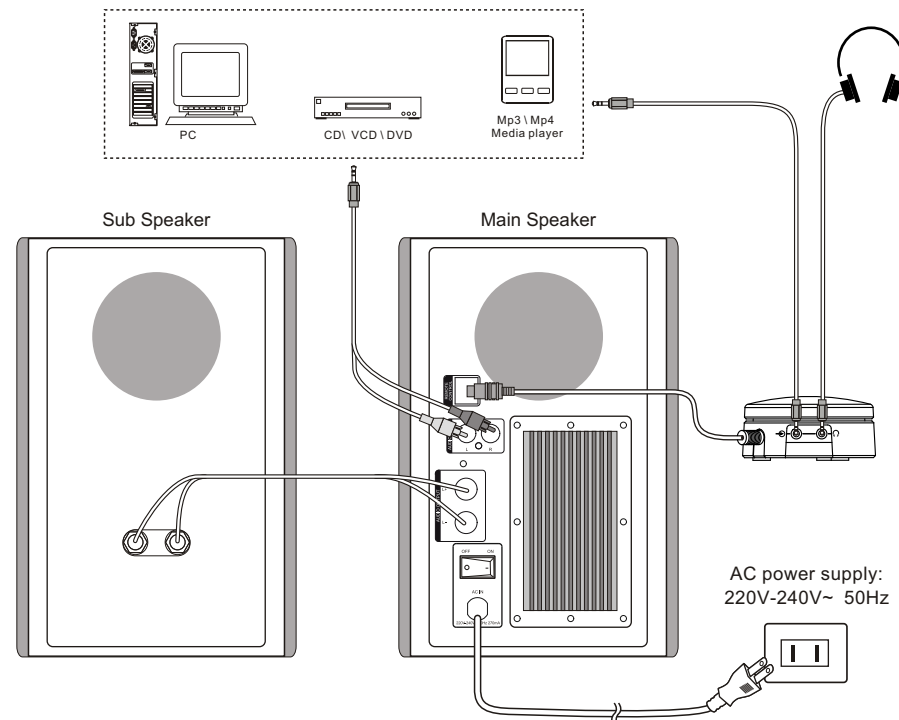


- |                         |                    |                       |
|-------------------------|--------------------|-----------------------|
| 1. Wired remote control | 4. Power switch    | 7. Bass reflex tunnel |
| 2. Audio input          | 5. AC power supply | 8. Terminals          |
| 3. Audio output         | 6. Heat sink       |                       |

**Wired remote control :**



- Master volume knob: Turn clockwise to increase playback volume and counterclockwise to decrease volume.
- Audio source input jack: 3.5mm stereo input jack for connections to computer sound Output and other media player devices.
- Earphones output jack: 3.5mm stereo earphones or headphones connection.
- Power LED: red colour illumination when power is on.



\*please note the figure above for this product system correct placing and connection

**1. Multimedia speaker connections**

- Connect the interconnect speaker cable to the Subspeaker and the other end to the Main speaker's audio output jacks (terminals)
- Ensure the terminal polarity connections are matched both ends.
- Ensure the master volume on the wired remote control is turned down low or minimum, connect the 2RCA left and right connectors to the Main speaker rear audio input jacks.
- Connect the corresponding end to your playback device.
- Plug the AC power cable to source and turn on the power.

**2. Alternative connections**

- For easy access, you can connect your earphones or headphones to directly to the wired remote control. Note: the main speakers will mute once this jack is used.
- Secondly, you can connect a direct input from any playback source to the 3.5mm stereo input jack on the wired remote control.

Note: The connections on the wired remote control precedes the input on the rear panel of the speaker. The input on the speaker will mute if a source is added on the wired remote control.

**3. Operation**

- Depress the POWER switch on the Main speaker to turn on the multimedia speaker system.
- Ensure that your audio source is correctly configured and start the playback file.
- Adjust the master volume on the wired remote control to your preferred level.